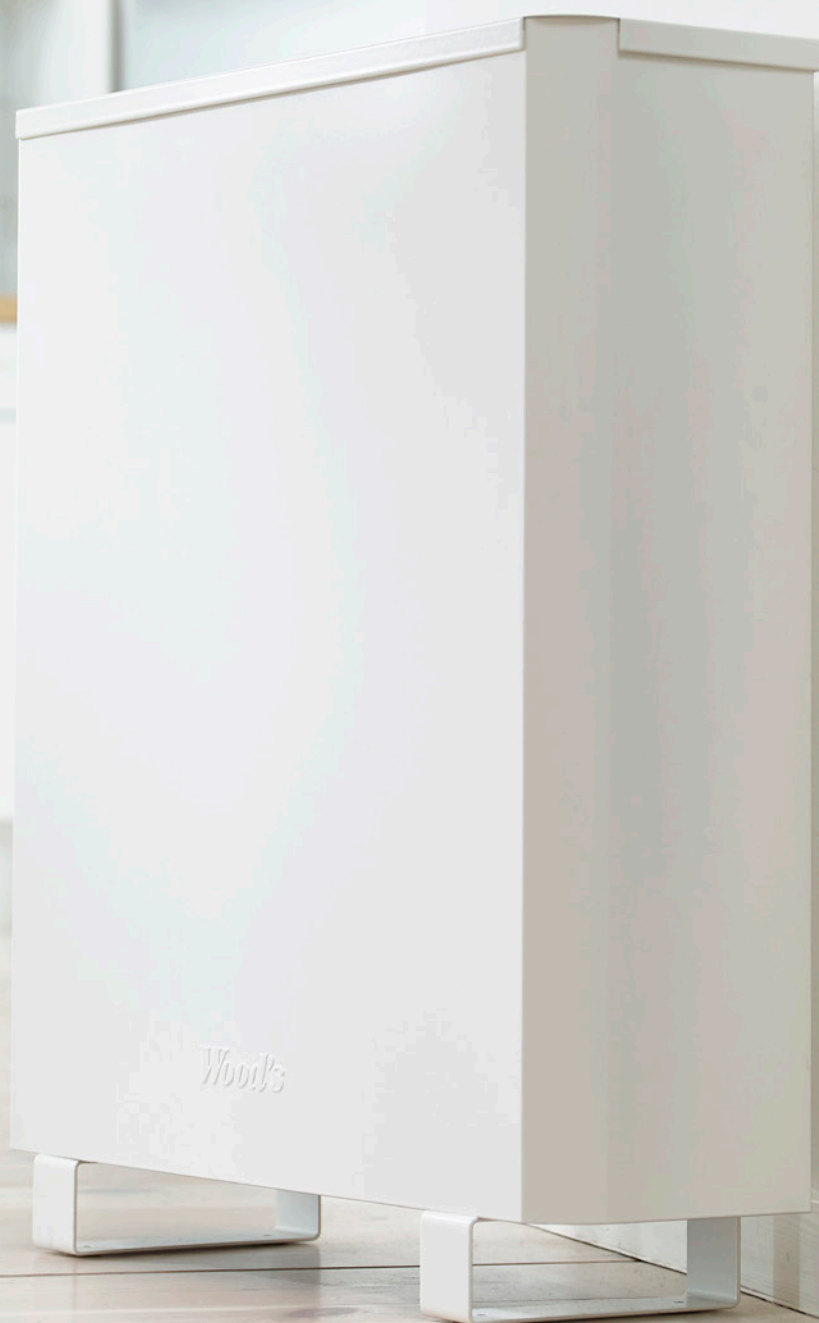


# Wood's®

Product Catalogue 2015



Made in Sweden



## Air Purifiers

Quiet and efficient air purifiers  
with the lowest energy consumption.

Healthier homes since 1970.

[www.woodsairpurifiers.com](http://www.woodsairpurifiers.com)

The price of clean air:

3€ yearly

An air purifier from Wood's can run every hour of the day, every day of the year, and still not consume more than 26kWh over the entire year.

That is 4 times less than a low energy light bulb being used the same way.

Wood's believe that the clean air today should not come at the expense of clean air tomorrow.

That is why Wood's air purifiers are made of sustainable materials and have the lowest energy consumption.

Wood's®



## Table of contents.

I. The Wood's history, from Lidköping to Alingsås

II. A greener choice

III. What is air pollution?

IV. The workings of Wood's air purifiers

V. Patented filter technique - Active ION HEPA

VI. Chem Control Carbon - against gas and odour

VII: Products

Wood's ELFI 150

Wood's ELFI 300

Wood's ELFI 900

VIII. Certifications and test results

IX. Technical specifications



Made in Sweden





## Made in Sweden

Wood's air purifiers are innovated, developed and manufactured in Sweden - from the sheet metal of the body and the filters, to the final assembly. Around the world, Swedish products are known for quality and durability - a legacy we are proud to carry on.

## Healthier homes since 1970.

Wood's air purifiers are developed from a Swedish patent, invented by Jan-Olof Wallin. Jan-Olof has dedicated his entire career to finding the best and most innovative air cleaning solutions. Today, over 40 years later, the extensive research has lead to some of the best and most advanced air purifiers available.

Now retired, Jan-Olof's experience and ingenuity is still very much present as the Wallin family continues to play a key role at Wood's.

## Innovation and quality.

When developing new products, Wood's always put the consumer use first. This results in highly efficient, reliable and discrete air purifiers of top quality with market leading warranties.

With a background in manufacturing solutions for the medical and food industry, Wood's apply the same high standards when developing air purifiers for home use.

**Wood's®**

A greener choice.

Wood’s air purifiers are made in Sweden with a dedication to giving you the cleanest air possible, with as little environment impact as possible. That is why Wood’s air purifiers are made of Swedish metal and have one of the best energy consumption to CADR ratios of any air purifier.



Eco friendly, human friendly.

We at Wood’s believe that we not only need to clean the air of our time, we also need to make sure to keep the air as clean as possible for future generations. Therefore, we have put extra focus on power consumption when developing air purifiers, creating healthier air today and tomorrow.

Green from start to finish.

Dedicated to creating cleaner air, today and tomorrow, Wood’s always focus on both the environment and the user - from start of production to the finished product.

Green in production:

Wood’s air purifiers have a body of Swedish sheet metal. Metal is a recyleable material that is a good choice for the environment.

By using almost exclusively Swedish made parts, Wood’s are also able to keep transports during production to a minimum.

Green in use:

Consuming no more energy than your alarm clock or internet router, Wood’s air purifier will leave a small carbon footprint.

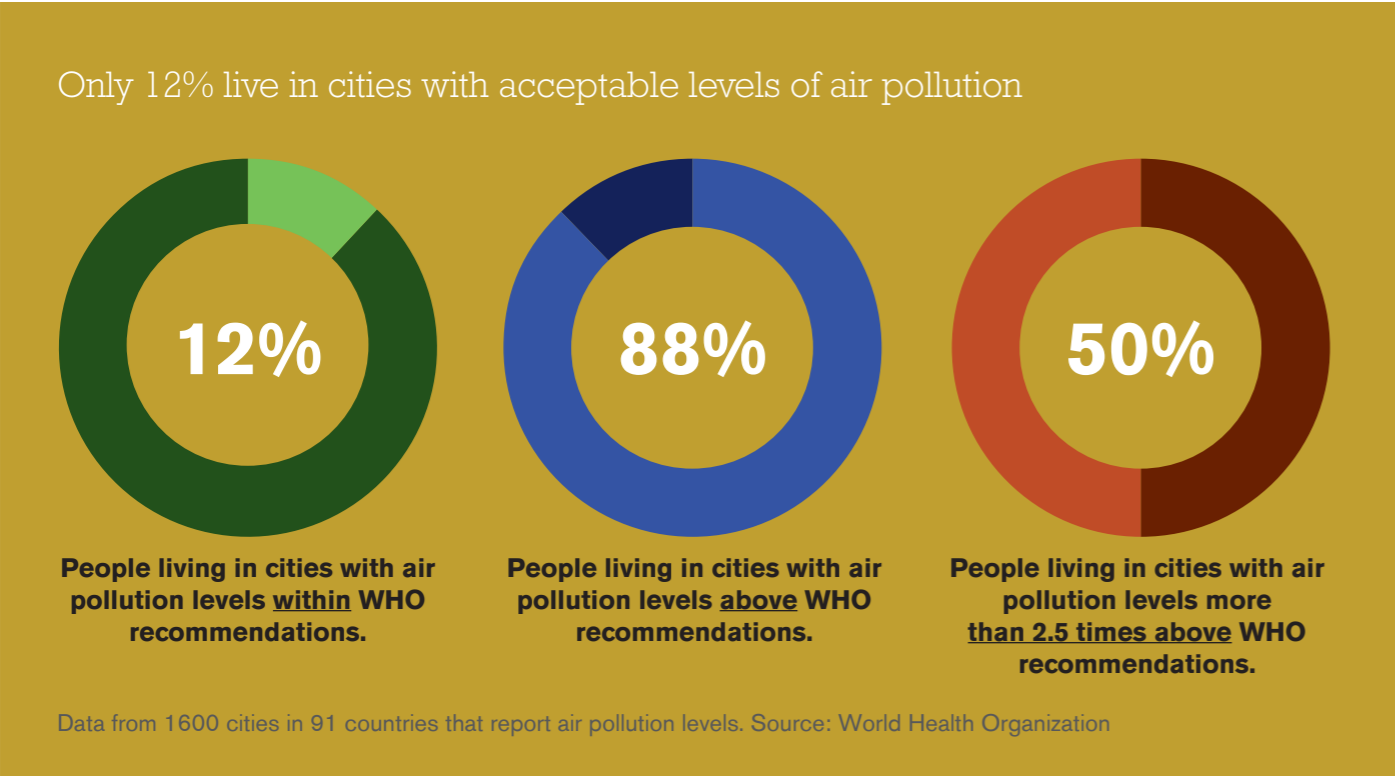
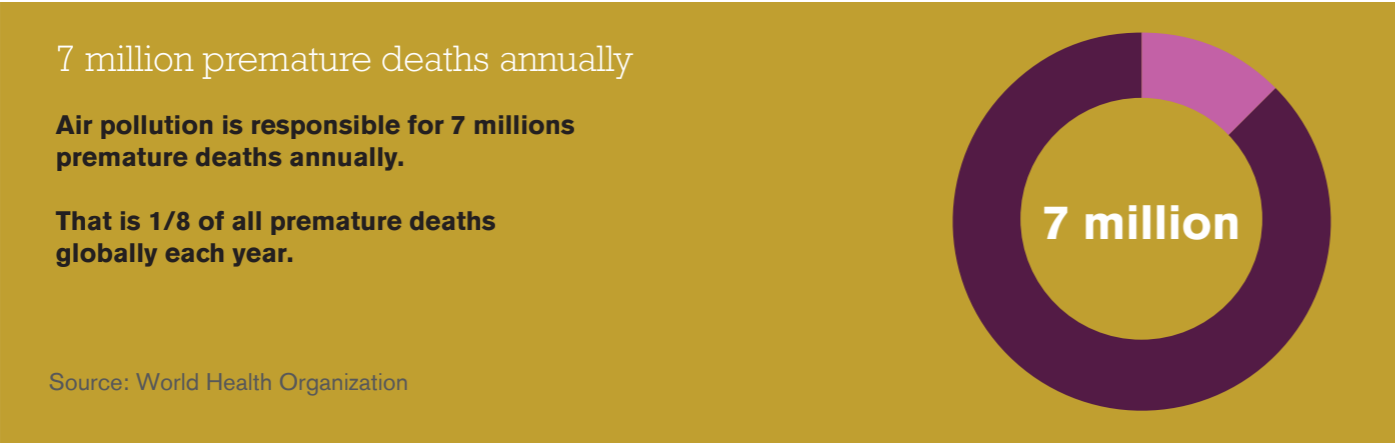
Creating a cleaner household air, Wood’s air purifiers are also quiet in operations and will not distrurb you with disruptive noises.



# Air pollution

*A major global health problem*

Did you know that air pollution can lead to several serious diseases, such as stroke, cancer and heart and respiratory diseases?



Control the air pollution levels of your city at [www.who.int](http://www.who.int)

## What is air pollution?

Air pollution occurs when particles, biological molecules or other harmful materials are introduced into the atmosphere. About half of the global urban population are exposed to air pollution levels more than 2,5 times higher than recommended levels. Energy and transportation are some of the major causes of air pollution.



## Air particles indoors.

Outdoor air pollution enters our homes and impairs the indoor air quality. Even if the outdoor air is relatively clean, we introduce a lot of particles into our household air from chemicals, clothes, pets, smoking, dust etc. High amounts of such particles will also affect our health and can lead to allergies, asthma and serious diseases.

### Make the air safe again!

By using an air purifier, you remove harmful particles from the indoor air. Instead of breathing in the particles, they stick in the air purifier's filter. Breathing clean air has many health benefits and makes you feel healthier and more refreshed.

It is important that the air purifier is efficient enough to remove small particles, so called fine particulate matter (such as PM2,5). These are most hazardous and the most difficult to remove from the air.

*Some of the most common pollutants removed by Wood's air purifiers:*

- PM2,5
- PM10
- Dust
- Pollen
- Mould spores
- Radon daughters
- Chemicals
- Pet dander
- Exhaust fumes
- Cigarette smoke
- Virus
- Bacteria
- ...

## The technique

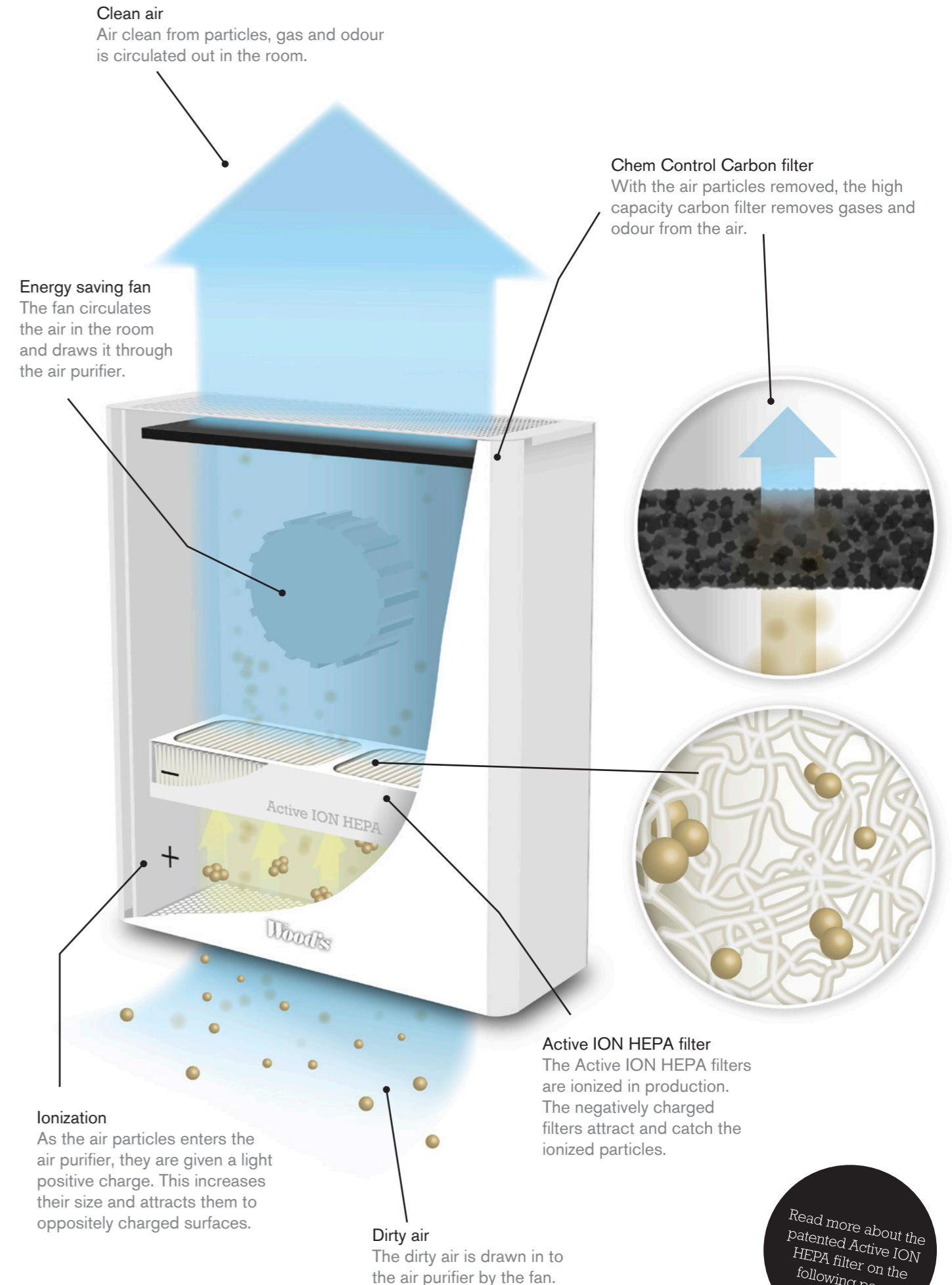
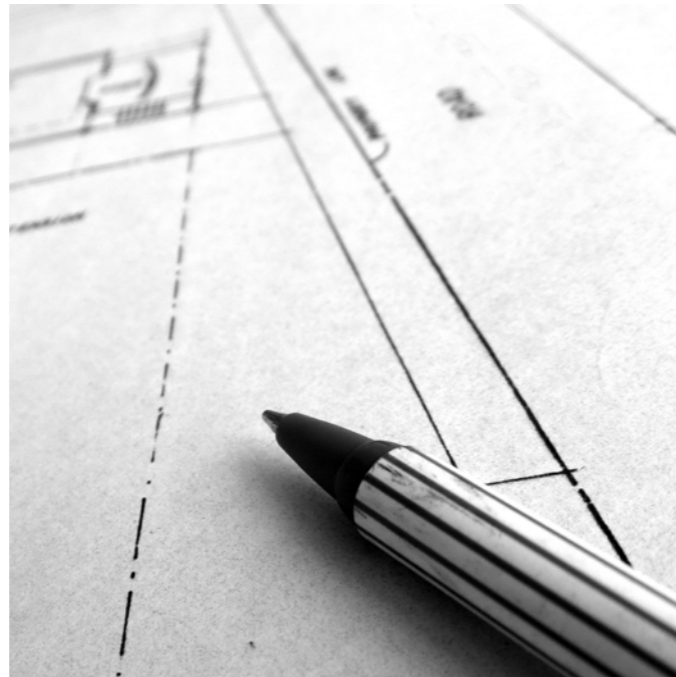
### *More efficient air cleaning with ionization*

Wood's air purifiers use ionization to attract and catch air particles. By ionizing the air particles as they enter the air purifier, the particles are given a light positive charge.

This makes the particles stick together, increasing their size and making them more easily caught. The air particles are also attracted to oppositely charged surfaces.

### Reliable parts, from Swedish manufacturers

Did you know that almost every part of a Wood's air purifier is manufactured in Sweden? Wood's pay special attention to the capacity, reliability and experience of all suppliers. Only those suppliers that can meet the high demands are allowed to supply parts to Wood's air purifiers.



Read more about the patented Active ION HEPA filter on the following page!

# Particle filtration

*Active ION HEPA - removes 99,98% of harmful particles*

Apart from exceptional cleaning capacity, the unique Active ION HEPA filters allow for great airflow and very low energy consumption and noise levels. The Active ION HEPA filters are pre-ionized and can therefore be much sparser than traditional filters. This allows the air to flow almost freely through the filter and still come out free from particles.

The main benefit of using sparser filters is that you don't need any large, noisy and energy consuming fan to push the air through the filter. As the pressure drop in the Active ION HEPA filters is minimal, Wood's can use smaller, energy saving fans to circulate the air in the room and through the air purifier.

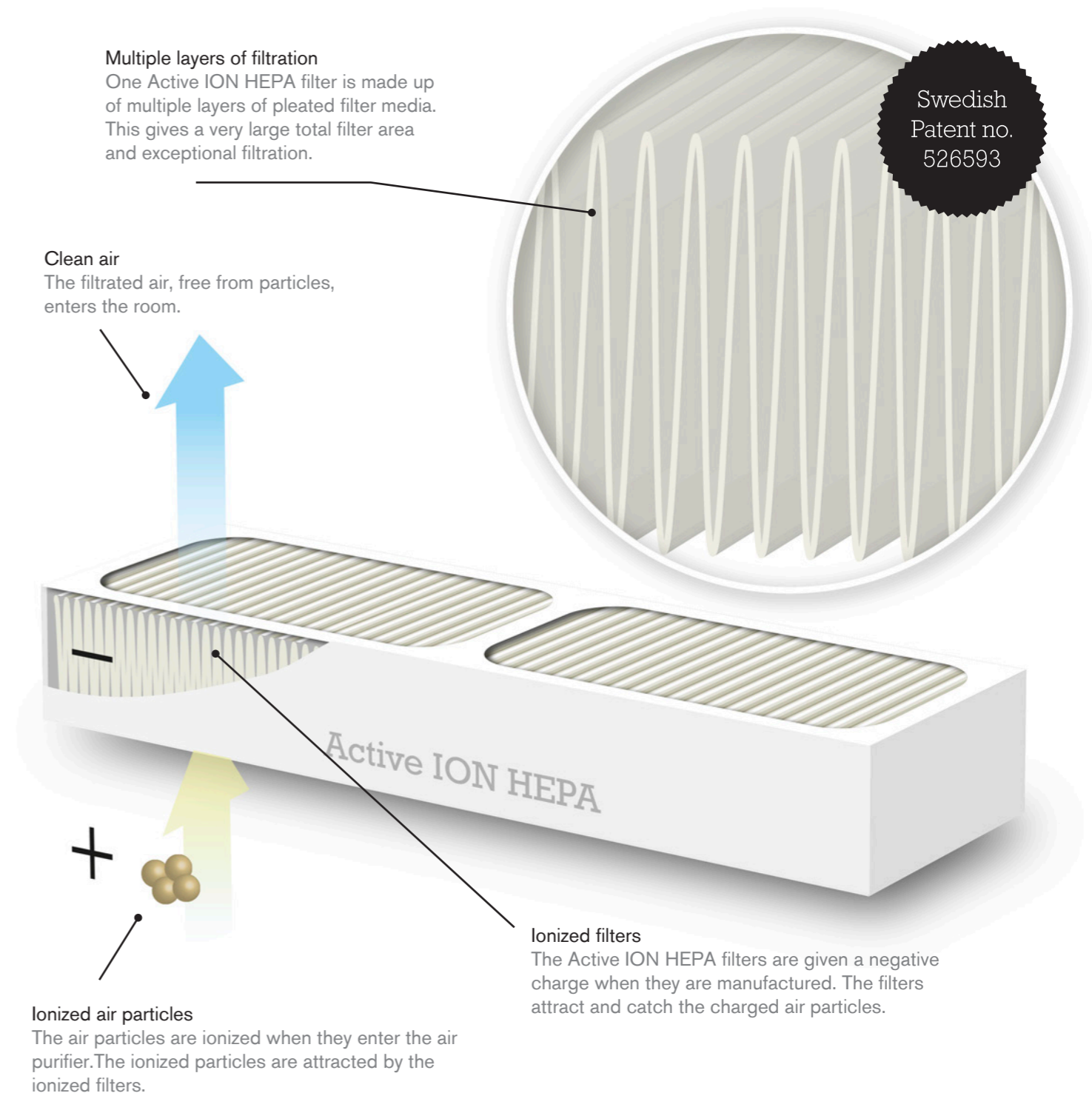
The Active ION HEPA filters also ensure more reliable filtration, as no air leaks on the side of the filter. This is always a risk with dense filters, as the air always will take the path of least resistance.

## The technique:

1.The air particles are ionized when they enter the air purifier and given a negative charge. The ionized Active ION HEPA filters attract and catch the charged particles.

2. Active ION HEPA filters are less dense than traditional HEPA filters, with the same purification results. Less dense filters means much less energy consumption and lower noise levels as the air flow isn't blocked.

3. Capacity: 99,98% filtration down to particle size 0,0003 mm (50 times smaller than bacteria).



## Why is a less dense filter better?

- Able to use smaller fans.
- A smaller fan is more quiet
- It also consumes less energy.
- No risk of air passing unfiltered (leakage of particles).





# Remove smoke, gas and odour

## Chem Control Carbon Filter

Wood's Chem Control Carbon Filters are made in Germany of excellent quality carbon. The Chem Control Carbon filters are used to remove smoke, gas and odour from the household air. Containing high densities of active carbon, Wood's Chem Control Carbon Filters provide a long-lasting, reliable and highly efficient filtration capacity.

Wood's Chem Control Carbon Filter is available with different amounts of carbon (a higher amount of carbon means a longer lasting filter) for the ELFI 300 and ELFI 900 air purifiers.

### How carbon filtration works:

The contaminated air passes through the adsorbent (the carbon). When the gas molecules pass through the microscopic pores in the adsorbent they are adsorbed onto the surfaces through physical bonding (molecular attraction forces).

This is called adsorption.



### Gases managed by Wood's Chem Control Carbon Filter:

Acetylaldehyde Acetone - Acrolein - Acrylamide - Acrylonitrile - Allyl alcohol - Ammonia NH3 IC - Amylacetate - Aniline - Arsine IC - Benzene - Petrol (aviation, engine, commercial) - Petrol (Industrial - of type hexane, - of type heptane, - of type octane) - p-Benzoquinone (quinone) - Benzo(a)pyrene - Benzyl chloride - Biphenyl (diphenyl) - Lead, org. pollutants, tetraethyl lead, tetra - methyl lead - n-Butanol (n-butyl alcohol) - Butanols (butyl alcohols) - Butyl acetate - n-Butyl alcohol (n-butanol) - n-Butyl acrylate 4 - Butylcellosolve (butyl glycol, glycolmonobutyl ether) - n-Butylglycidylether - Butyl glycol (glycolmonobutyl ether, butylcellosolve) - Cellosolve (ethyl glycol, glycol monoethyl ether) - Cellosolve acetate (glycol, monoethyl ether acetate) - Cyanides and hydrogen - cyanide IC (as CN) - Cyanogen chloride IC (Cyclohexane, Cyclohexanol, Cyclohexanone) - aliphatic hydrocarbons - Di-(2-ethylhexyl) - phthalate - Diphenyl (biphenyl) - Diglycidyl ether (DGE) - o-Dichlorobenzene - p-Dichlorobenzene - 1,2-Dichlorethane (ethylene dichloride) - Nitrous oxide (laughing gas) N - Dimethylformamide - Dimethyl hydrazines - Dinitrobenzene, all isomers - Dioxane - Efrane (Enflurane, 2-chloro-1,1, 2-trifluorethyl-difluormethylether) - Enflurane (Efrane, 2-chloro-1,1, 2-trifluorethyl-difluormethylether) - Epichlorohydrin - Ethanol (ethyl alcohol) - Ether (ethyl ether) - Ethyl acetate - Ethyl acrylate - Ethyl alcohol (ethanol) - Ethyl benzene - Ethyl cyanoacrylate - Ethylenediamine - Ethylene dichloride - (1,2-dichloroethane) - Ethylene glycol (glycol) - Ethylene glycol dinitrate - (nitro glycol, glycol dinitrate) - Ethylene chlorohydrin (2-chloroethanol) - Ethylene oxide - Ethyl ether (ether) - Ethyl glycol (glycol monoethyl ether, cellosolve) - Ethyl chloride - Phenol - p-Phenylenediamine - Phenyl glycidyl ether - Phenyl isocyanate - Fluoride - Fluorides, incl. hydrogen fluoride (as F) IC Capacity - Hydrogen fluoride - Fluothane (Halothane, 1,1,1-trifluor-2-chloro-2-bromoethane) - Formaldehyde - Phosphoric acid, vapour P/IC - Phosphine - (phosphorated hydrogen) P/IC - Phosgene (carbonyl chloride) - Kerosene (aviation, motor) - Freon 113 (1,1,2-trichloro-1,2,2-trifluoroethane) - Phthalic anhydride - Furfural - Furfuryl Alcohol - Glutaraldehyde - Glyceryl trinitrate (nitro-glycerine) - Glycol (ethylene glycol) - Glycol dinitrate (nitro glycol, ethylene glycol dinitrate) - Glycol monobutyl ether (butyl glycol, butyl cellosolve) - Glycol monoethyl ether (ethyl glycol, cellosolve) - Glycol monoethyl ether acetate (cellosolve acetate) - Glycol monomethyl ether - Halothane (Fluothane, 1,1,1-trifluor-2-chloro-2-bromoethane) - Heptane - Hexamethylene - diisocyanate (HDI) - n-Hexane - Hexane, except n-hexane - Hydrazine - Hydroquinone - 2-Hydroxyethyl acrylate - Isophorone - Isophorone diisocyanate (IPDI) - Isopropanol (isopropyl alcohol) - Isopropyl alcohol (isopropanol) - Isopropylnitrate - Iodine - Carbonyl chloride (phosgene) - Quinone (p-benzoquinone) - Chlorine - Chlorine cyanide - (cyanogen chloride) - Chlorine dioxide - 2-Chloroethanol (ethylene chlorohydrin) - Chlorophenols and salts - Chloroform - Chloroprene (2-chloro-1,3-butadiene) - 2-Chloro-1,1,2-trifluorethyl-difluormethylether (Efrane, Enflurane) - Hydrogen chloride - Carbon dioxide - Carbon disulphide - Carbon monoxide (carbon oxide) N - Carbon oxide (carbon monoxide) -Carbon tetrachloride - Cresyl glycidyl ether - Mercury, alkyl groups (as Hg) IC - Nitrogen dioxide NO2 - Nitrogen oxide NO N White spirit - Laughing gas - (nitrous oxide) NO, N2O N - Maleic anhydride - Methanol (methyl alcohol) - Methyl acrylate - Methyl alcohol (methanol) - Methyl bromide - Methyl n-butyl ketone - Methyl cellosolve - (glycol monomethyl ether) - Methyl cyanoacrylate - Methylene diphenyl - diisocyanate (MDI) - Methylene chloride - Methyl ethyl ketone (MEK) - Methyl ketone peroxide - Methyl isobutyl ketone (MIBK) - Methyl iodide - Methyl chloride - Methyl chloroform (1,1,1-trichloroethane) - Methyl methacrylate - Napthalenes, chlorinated - Naphthalene diisocyanate (NDI) - Nitro benzene - Nitro-glycerine (glyceryl trinitrate) - Nitro glycol (ethylene glycol dinitrate, glycol dinitrate) - 2-Nitropropane - Nonanes - Octanes - Ozone - PCB (polychlorinated biphenyls) - Pentachlorophenol and salts - Pentanes - Perchloroethylene (tetrachloroethylene) - Petroleum naphtha - Polychlorinated biphenyls (PCB) - n-Propanol (n-propyl alcohol) - n-Propyl alcohol (n-propanol) - Propylene oxide - Pyridine - Raw cotton (cotton dust) - Nitric acid - Hydrogen selenide - Styrene - Sulphur dioxide IC - Sulphuric acid, vapour - Hydrogen sulphide IC Turpentine - Tetraethyl lead (as Pb) - Tetrahydrofuran - Tetrachloroethylene (perchloroethylene) - Tetrachlorophenol and salts - Tetra methyl lead (as Pb) - Toluene - Toluene diisocyanate (TDI) - 1,1,1-Trifluor-2-chloro-2-bromoethane - (Halothane, Fluothane) - 1,1,1-Trichloroethane (methyl chloroform) - Trichloroethylene - Trichlorophenol and salts - 1,1,2-Trichloro-1,2,2-trifluoroethane (Freon 113) - Trimellitic anhydride (TMA) - Trimethylbenzene, all isomers - Trimethyl hexamethylene - diisocyanate (TMDI) - Vinyl acetate - Vinylidene chloride - Vinyl chloride - Vinyl toluene - Xylene - Acetic acid - Acetic anhydride ■



## 10 years warranty program

*Extend your warranty with Wood's filter program.*

Thanks to the high capacity and quality of the air purifiers and the Active ION HEPA filters, Wood's are now able to extend the product warranty of all our air purifiers, dramatically!

Register your air purifier and replace the Active ION HEPA filters when they are expired and receive the full 10 year warranty.

After registering at the Wood's website, we will send you a friendly reminder when a filter change is due. Of course, you can choose to exit the filter program at any time.

Wood's filter program

10

# 10 years warranty

Register online and replace  
the filters regularly to receive  
the extended warranty.

Enter the filter program at  
[www.woodsairpurifiers.com](http://www.woodsairpurifiers.com)



## Wood's® ELFI 150

Slim, compact and quiet - the Wood's ELFI 150 is the perfect choice for bedrooms or other areas that need to be as silent as possible.

Mount the ELFI 150 to the wall, or use it freestanding, and it will instantly provide you with cleaner and healthier air, consuming no more energy than your alarm clock.

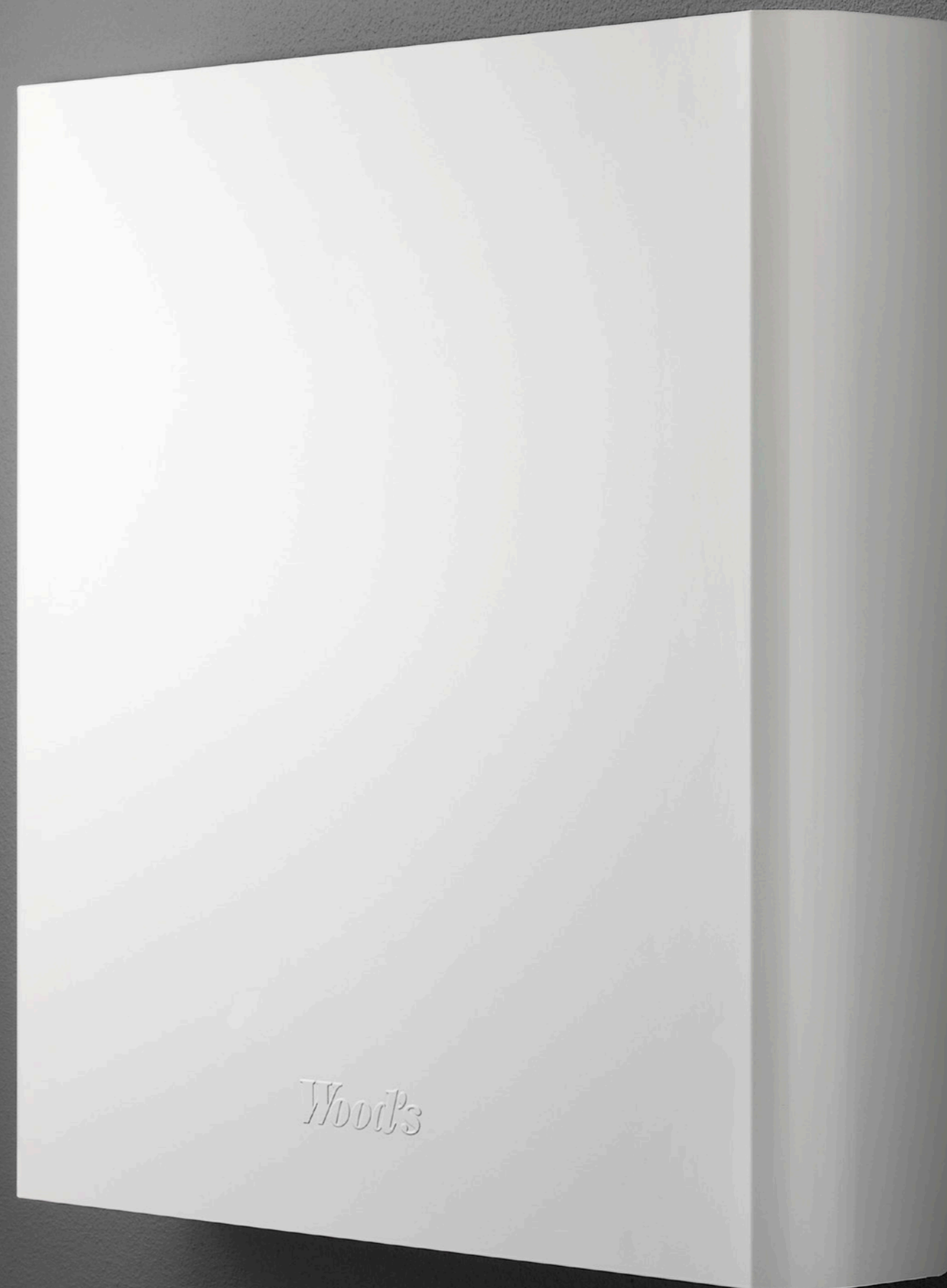


- 15-20 m<sup>2</sup>
- 3-11 W
- From 25dB
- Wall mounted
- Legs as accessory
- Active ION HEPA filter
- 3 fan speeds



Easy access for filter change.

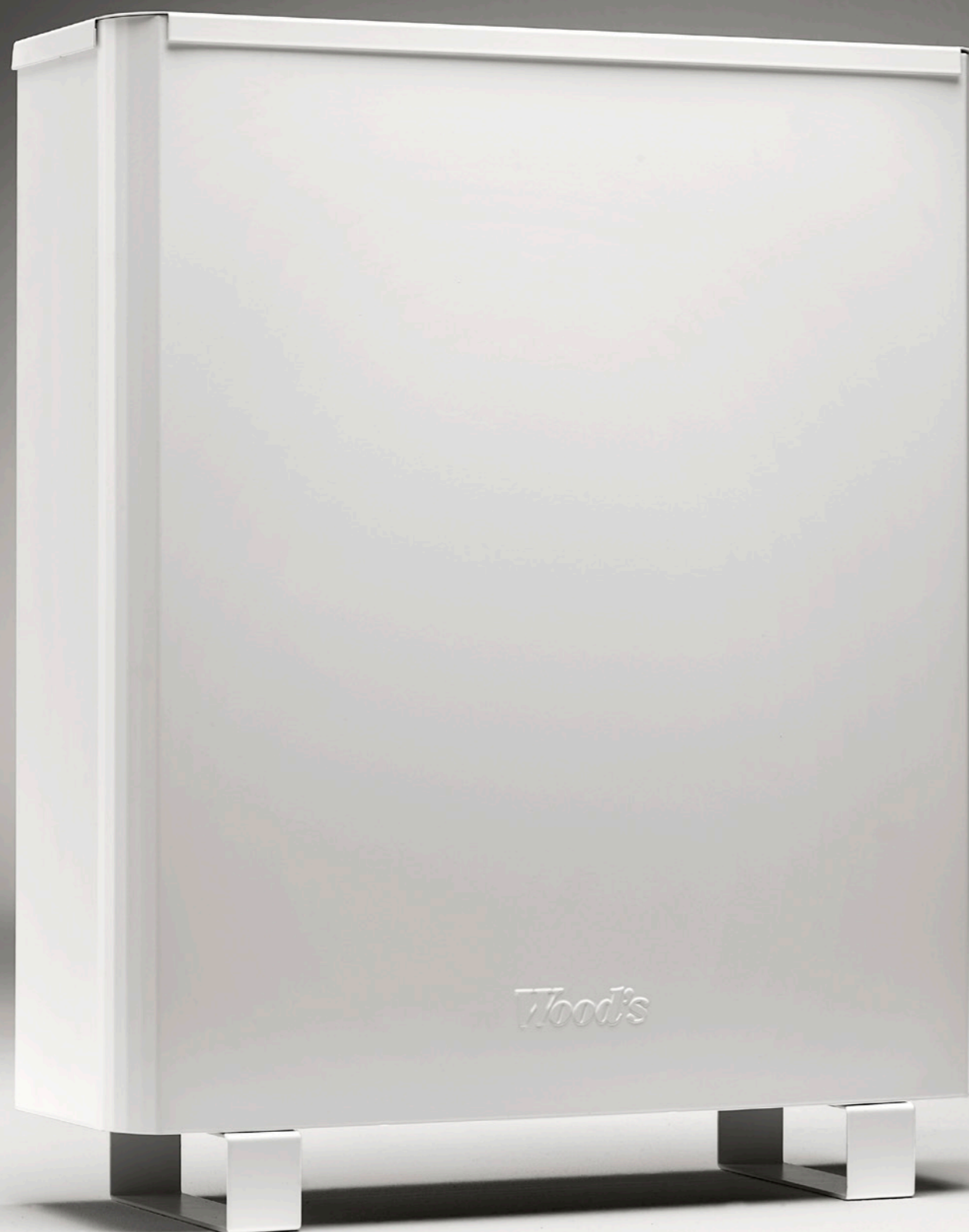
Wood's ELFI 150 are delivered with the patented Active ION HEPA™ filter. The front cover of the air purifier allows for easy access for filter change.



## Wood's® ELFI 300

Powerful and compact - with quiet operations and low consumption, the Wood's ELFI 300 is a highly efficient and versatile air purifier.

It's discrete yet elegant design makes the air purifier blend in with most environments, as it quietly and rapidly creates a healthier living environment.



- 30-40 m<sup>2</sup>
- 4-28 W
- From 25dB
- Carbon filter (optional)
- Stepless fan speeds
- Active ION HEPA filter



### Easy access for filter change

Wood's ELFI 300 are delivered with the patented Active ION HEPA™ filter. The back cover of the air purifier allows for easy access for filter change. If you are using a carbon filter, it is placed on the top of the unit, underneath the top cover.

## Wood's® ELFI 900

One of the most powerful air purifiers available, the Wood's ELFI 900 still has very moderate energy consumption and noise levels.

Built to handle large and demanding areas, the ELFI 900 have double Active ION HEPA filters for the fastest and most efficient cleaning capacity.



Easy access for filter change.

Wood's ELFI 900 are delivered with double Active ION HEPA™ filters. Turn to open the front latch to access the filters. If you're using carbon filters, they are placed outside of the Active ION HEPA™ filters.



# Certifications and test results

Wood’s air purifiers have gone through rigorous testing. With top results in both domestic and international tests, you can rest assured that Wood’s air purifiers delivers not only on the promise of clean air, both also on the promise to keep noise levels and energy consumption as low as possible.

The Association of Home Appliance Manufacturers (AHAM) is world leading in the testing of home appliances, and have tested hundred of air purifiers on cleaning capacity and energy consumption. The AHAM VERIFIDE and ENERGY STAR are awarded only to the units that fulfill AHAM’s high demands.

## What does CADR mean?

CADR stands for "Clean Air Delivery Rate". CADR is a measurement that combines air flow with filtration capacity and is the ratio of clean air that the air purifier can deliver based on its air flow. The closer the CADR of an air purifier is to its air flow, the more efficient it is.

For example, an air purifier with the air flow of 100m³/h would have a best possible CADR of 100.

Wood's ELFI 150



CADR Tobacco smoke	109
CADR Dust	134
CADR Pollen	151



Total energy consumption	10,6 W
Dust CADR / Wattage	7,7
Total measured standby power	0,7 W



Ozone emitted (‰)	0
PM2,5 removal 10 min (%)	51
PM2,5 removal 20 min (%)	73
PM2,5 removal 30 min (%)	85
PM2,5 removal 40 min (%)	91
PM2,5 removal 50 min (%)	95
PM2,5 removal 60 min (%)	97

Wood's ELFI 300



CADR Tobacco smoke	285
CADR Dust	331
CADR Pollen	370



Total energy consumption	28,3 W
Dust CADR / Wattage	6,9
Total measured standby power	0,7 W



Ozone emitted (‰)	0
PM2,5 removal 10 min (%)	86
PM2,5 removal 20 min (%)	98
PM2,5 removal 30 min (%)	>99
PM2,5 removal 40 min (%)	>99
PM2,5 removal 50 min (%)	>99
PM2,5 removal 60 min (%)	>99

Wood's ELFI 900



CADR Tobacco smoke	552
CADR Dust	555
CADR Pollen	588



Total energy consumption	79,3 W
Dust CADR / Wattage	4,5
Total measured standby power	0 W



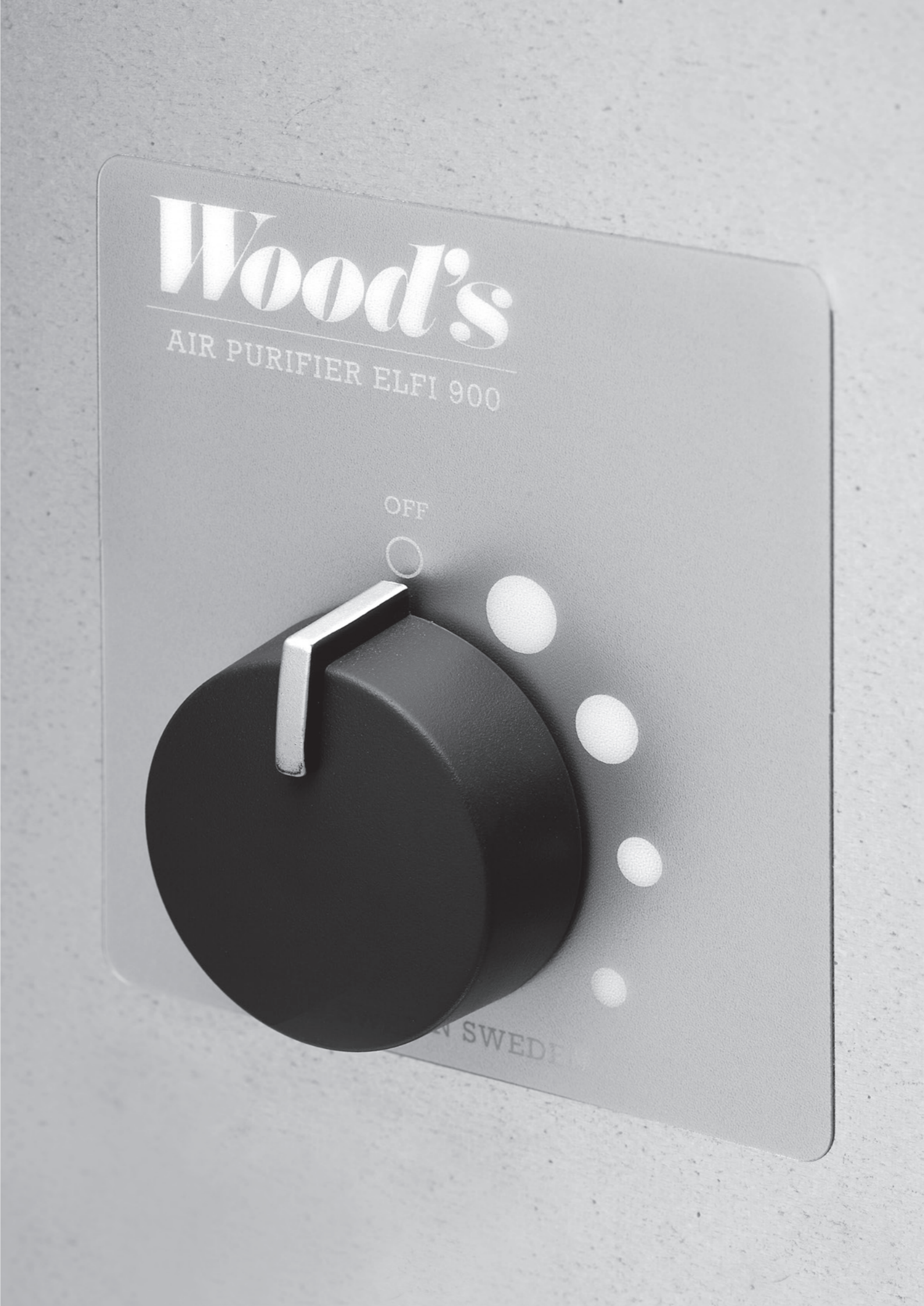
Ozone emitted (‰)	0
PM2,5 removal 10 min (%)	96
PM2,5 removal 20 min (%)	>99
PM2,5 removal 30 min (%)	>99
PM2,5 removal 40 min (%)	>99
PM2,5 removal 50 min (%)	>99
PM2,5 removal 60 min (%)	>99

Techinal data

	ELFI 150	ELFI 300	ELFI 900
Fan speeds	3	Stepless	4
Recommended area	15-20 m²	30-40 m²	60-80 m²
Power consumption	3-11 W	4-25 W	24-73 W
Noise level	From 25 dB	From 25 dB	From 30 dB
Purification level	99,98%	99,98%	99,98%
Voltage	12V	12V	220-230 V
Weight	6,9 kg	12 kg	15,2 kg
Dims. LxWxH	105x505x500	160x510x510	220x565x615
Number of filters	1 x Active ION HEPA	1 x Active ION HEPA	2 x Active ION HEPA
CADR Smoke	109	285	552
CADR Dust	134	331	555
CADR Pollen	151	370	588
CADR to wattage	13,1	11,7	7,7
Art. no replacement filter	ELFI HEPA 150	ELFI HEPA 300	ELFI HEPA 900 (2-pack)
Accessories		Carbon filter	Carbon filter
		Pleat: 130g	Pleat: 100g (2-pack)
		Granulate: 600g	



Follow the Wood's story online  
at [www.woodsairpurifiers.com](http://www.woodsairpurifiers.com)



[www.woodsairpurifiers.com](http://www.woodsairpurifiers.com)

**Distributor:**

TES Scandinavia AB  
Maskingatan 2-4. 441 39, Alingsås, Sweden.  
Tel. +46(0)317613610